

HOLIDAY HOME SALES



Now you have seen the fantastic facilities we offer...
Imagine owning your own holiday home.

Ownership offers exceptional value for money and numerous family holidays throughout the year, many of our owners visit every weekend!

- 18 Hole Golf Course plus Family Pitch & Putt
- Heated Indoor & Outdoor Pool Waterpark
- Free Swimming
- Fishing Lake & Beach Fishing
- Choice of bars with free entertainment
- Ten Pin Bowling
- Fun City – The South West's Largest Theme Park
- Brean 5 mile Beach
- Local Attractions
- Costcutter Supermarket
- New Year Breaks
- Fenced gardens allowed
- Subletting permitted – earn an income!
- Open 3rd Friday in February to 2nd Sunday in November

Try before you buy

enjoy our resort and facilities and we'll refund your break cost when you purchase a new Holiday Home.

- Fantastic affordable deals on a great range of Holiday Homes
- Excellent on-site facilities
- Family owned for over 65 years
- Buy to let options for extra income
- Holiday Homes for sale from £6,995
- Finance available

FREE BREAK
WE WILL REFUND YOUR HOLIDAY IF YOU PURCHASE A NEW HOLIDAY HOME DURING YOUR STAY!

Visit our website for current vans for sale at

www.hru.co.uk
or call **01278 751235**

Email: **admin@hru.co.uk**
Web: **www.hru.co.uk**
Reception and Holiday enquiries: **01278 751235**
Fax: **01278 752006**
Holiday Home Sales: **01278 751602**



Do you know another holiday resort that offers so many facilities?

Holiday Resort Unity, Coast Road, Brean Sands, Somerset, TA8 2RB



More than just a holiday!



BREAN SANDS SOMERSET

THE SOUTH WEST'S LEADING RESORT!

www.hru.co.uk • 01278 751235

2012

Holiday Resort Unity is a family owned four star Resort at Brean Sands, Somerset that offers plenty of choice and is a true holiday location near the sea and overlooking the countryside. In 2012 the House family are celebrating 65 years at Holiday Resort Unity. Back in 1947 there was just three caravans and in July each year Fry's chocolate used to come for their annual fortnights holiday in 'Bell' tents, cook house in the middle, men's tents one side –

Mums, Dads, Grans, Grandads, Children welcome and well behaved pets



ladies tents the other. They kept up this tradition until the early 60s. With this many years experience we know the importance of creating the perfect base and being part of your holiday memories.

In 1947 Unity had 60 cows and was mostly a dairy farm of 150 acres. Now the resort is nearly 300 acres, the cows have gone and there are 1200 pitches, an 18 hole golf course, fun city featuring over 40 rides and attractions and Brean Splash Water Park. With more facilities than most other parks in the UK, you have plenty to choose from or you can simply relax, unwind and take in the sights of Somerset, including the famous **Cheddar Gorge, Somerset Levels, Wookey Hole, Mendip Hills and the Exmoor National Park.** We are at the top of the West Country where there are many other places to visit, perhaps you will venture out and about to explore the many attractions, you must try some Somerset Scrumpt! There is something for all ages and during school holiday breaks for adults at periods when children are at school.

LOVE YOUR LEISURE



Glastonbury Tor



Cheddar Gorge



PRICE PROMISE SPECIAL OFFERS

book early and you are guaranteed the best price.

We recognise the current economic climate is not easy, however do not forget your leisure time – enjoy one of the best UK family breaks and enjoy great value.

Brean Leisure Park is part of our resort, the largest Fun Park in the South West with over 40 rides and attractions, pool complex, entertainment venues and food & drink outlets. It is also the home to open air Markets and Car Boot sales. Don't miss Pig and Donkey racing July/August.

We are ideally situated next to a sandy beach only 5 miles from the M5. We offer pitches for tents, tourers and motorhomes as well as hiring from our range of lodges, caravans and villas – we even have Eurotents for hire!

The resort is also the home of Brean Golf Club (an 18 hole meadow land course). You receive half price green fees when you stay at our resort. We also have a 9 hole Pitch and Putt course which is very popular with families and where you can receive discounts.

Great value family holiday fun!



Follow us on Twitter & Facebook

twitter

Twitter "@breansands"

facebook

Search "Holiday Resort Unity"

ALL the facilities you could wish for



- ✓✓✓ 18 Hole Golf Course
- ✓✓✓ 9 Hole Pitch & Putt
- ✓✓ Amusement Arcades
- ✓✓ Bars, Restaurants, Shops and Takeaways
- ✓✓✓ Buster's Gym & Sally's Sun Bed (Over 18's)
- ✓✓✓ Car Wash & Autogas
- ✓✓✓ Cash Bingo
- ✓✓✓ Cash Points
- ✓✓✓ Costcutter Supermarket
- ✓✓✓ Dog Walks
- ✓✓✓ Evening Mini Bus / Land Train
- ✓✓ Fun City Theme Park - with over 40 Rides

- ✓✓ Go Karts
- ✓✓ Hire Centre
- ✓✓ Horse Riding
- ✓✓✓ Brean Splash Waterpark
- ✓✓✓ Internet Access
- ✓✓✓ Laundry
- ✓✓✓ Market & Car Boot Sale
- ✓✓✓ Pond And Sea Fishing (License Required)
- ✓✓✓ Sandy Beach Nearby
- ✓✓✓ Sky Sports & Big Screen TV
- ✓✓✓ Super Outdoor Play Area
- ✓✓✓ Unity Bowl: Arcade and Ten Pin Bowling



see page 16

Some facilities incur an extra charge - please check our website for details

FACILITY OPENING TIMES: these are the expected minimum operating periods

- ✓ HIGH SEASON: 6th - 8th APRIL, 1st - 7th JUNE, 20th JULY - 30th AUGUST
- ✓✓ WEEKENDS: EASTER- OCTOBER & DAILY DURING HIGH SEASON.
- ✓✓✓ AVAILABLE: FEBRUARY- NOVEMBER

Some facilities may only be open part of a day in quiet periods

HORSES

can be accommodated in our stables, outside of high season.

Call **01278 751235** for details.

places to eat and shop

THE TAVERN:

A selection of homemade food, including breakfasts, lunches and evening meals. Home of the famous Sunday carvery.

DICKIES:

Wide menu choice, including kid's meals and our popular family specials.

THE PATIO:

An alfresco eating area, big screen and a range of meals and snacks.

OGGY OGGY PASTY COMPANY: Serving a wide range of freshly baked West Country pasties.

*SUBWAY:

Great value, freshly made to order.

RICARDOS ICE CREAM PARLOUR:

All your favourites.

RJ'S:

A great selection of food, including steaks, ribs, pizzas and burgers. Kid's meals and daily specials available.

TREASURE:

Chinese takeaway.

SARAH'S PANTRY:

Eat in or takeaway café.

WIMPY:

All the classic favourites eat in or takeaway.

*BAY OF INDIA:

Indian takeaway.

*THE BIG DEAL:

Family restaurant.

*Located off the resort (1/2 mile).

Not all outlets are available all of the time. See your 'whats on' issued on arrival for times. Please check the website for more info at

www.hru.co.uk

Costcutter

On site supermarket for all your holiday shopping needs.

OPEN DAILY

- Fresh Food • Fresh Bread • Newspapers and Magazines • Ready Meals
- Toiletries • Caravan Essentials • Gifts and Cards • Resort Merchandise
- Children's Toys • A Selection of Beer and Wines

HIRE PACK: If you hire accommodation booked direct with us and stay for 7 days or more, you will receive a FREE voucher on arrival to use at Costcutter for your complimentary loaf of bread, pint of milk and 6 eggs.

FAMILY CENTRAL IT'S GOT EVERYTHING YOU NEED!

FIRST FOR FAMILY ENTERTAINMENT

2012

is going to be a great year for families with lots of great new activities for everyone to get involved.



MEET HUEY BUSTER & SALLY
THEY CAN'T WAIT TO SEE YOU!



TAKE A MEMORY HOME WITH OUR PIGLET MERCHANDISE
SUCH AS T-SHIRTS, TEDDIES AND KEYRINGS.

PIGLET CLUB

Feb. 10th - 19th, Easter - Sept. 25th plus Oct. 22nd - Nov. 4th*

For our younger guests, it just wouldn't be the same without the fun and games led by Buster, Sally and Huey. They help to make the holiday extra special for the little ones, with the assistance of the energetic and ever enthusiastic Somerstars, of course.

Piglet club is fantastic fun for children up to 12 years old, with lots of fun and games and activities such as Circus skills workshops, Pirate treasure hunts, Family Olympics, Teddy bear picnics, Prize bingo, eye spy wildlife and a chance to see one of our Piglets (BUSTER • SALLY • HUEY). Piglet club is a great way to make new friends have lots of fun, learn brand new skills and have a great time. The club runs in the mornings and sometimes has afternoon activities for all the family. Plus don't miss your chance for some fantastic early evening entertainment with our very own Piglet Funtime every night featuring fantastic shows from our very own piglets. We guarantee to get those chuckle muscles working and involve the whole family in our games and competitions along with Magic shows, game shows and of course everybody's favorite party dances - not to be missed!

* Please note: Children's activities do not replace parental supervision or responsibilities. Some activities may incur an additional charge. Under 8s must be accompanied by an adult.

call **01278 751235**

or book online: www.hru.co.uk



SWIM AND SPLASH

Dare you ride the turbo drop!

Shoot the rapids in a tyre on the river ride or brave the speed of the turbo drop... at the South West's BIGGEST waterpark!

Indoor Splash

- 25m heated 6 Lane Pool
- Constant depth of 1.2m
- Indoor Splash Play Park
- Family friendly changing
- Lane only sessions
- Lifeguards on poolside at all times
- Inflatable Fun & Float sessions
- Swimming lessons

Outdoor Splash

- Four Super Waterslides
- Seaside Water Splash Play Area (under 12s)
- Jacuzzi Pool (Adults Only)
- Lifeguards on all slides
- Swimming fun for all the family

OUTDOOR SPLASH
OPEN
WHITSUN – SEPT.

INDOOR SPLASH
OPEN
ALL YEAR!

LEARN TO SWIM CRASH COURSE
SEE
PAGE 17



DISCOUNTED ADMISSIONS WHEN YOU STAY WITH US
FROM £2 LOW SEASON TO £4 PER PERSON HIGH SEASON
See website for details

Splashing about in the pool with the kids is a fantastic way to spend a holiday!

CHECK www.hru.co.uk FOR OPENING TIMES

Brean Splash waterpark

SAVE MONEY!
BUY A BOOK OF TICKETS IN ADVANCE
SAVE UP TO **£15**

RESIDENT EXCLUSIVE
SAVE UP TO **HALF PRICE!**

Secure pushchair storage locks are available for a small charge.
At certain times the pool may be open for part of the day only. Slides are operated on rotation. Height restrictions apply.

call **01278 751235**
or book online: www.hru.co.uk

Unisex disabled changing room available, the indoor pool is accessed via walk down steps.

Visit the **Splash shop** for all your swimming needs. Relax in our new Splash Café proudly serving Starbucks Coffee and snacks to quench your hunger after your swim.

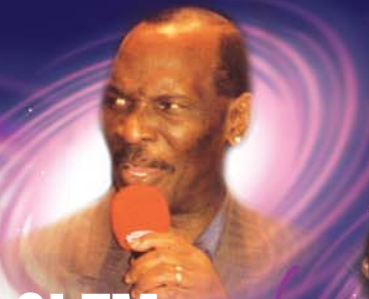
For your safety we operate an under 8's policy.
1 adult: 1 child under 4 years.
1 adult: 2 children 4-7 years.
See our special family sessions during low season where our under 8's policy is relaxed.
Splash operates in either 2 or 3 hour sessions. All slides are included in the admission fee. Under 2s free.

Development of Brean Splash is a phased project and future plans include enclosing the outside area.

S CLUB REUNION TOUR
14 April 2012



CLEM CURTIS AND THE FOUNDATIONS
23 June 2012



MIKE SCOTT'S FOUR TOPS REVUE
22 September 2012

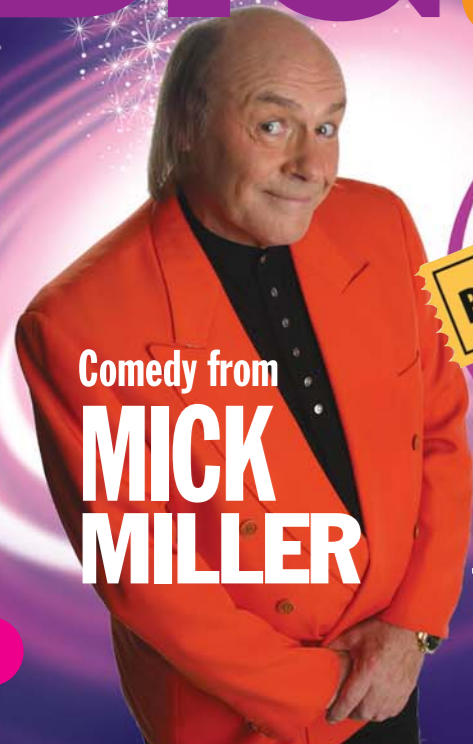
THE EAST COAST BOYS
13 October 2012



TAKE ALL THAT
20 October 2012



BIG NIGHTS OUT!



Comedy from
MICK MILLER

BOX OFFICE

Mick Miller
The Tavern • June 16 2012
The East Coast Boys
(Big Girls Don't Cry)
The Tavern • Saturday 13 Oct 2012
£8 including a basket meal

FAMILY STAR CABARET NIGHT
BOBBY DAVRO
19th May 2012
£5
children 13 & under FREE

BOBBY DAVRO

We offer a
WIDE RANGE OF THEMED WEEKENDS
see page 18

FAMILY ENTERTAINMENT WE CANNOT BE BEATEN!

four entertainment venues...

based at Unity or Brean Leisure Park
there is so much choice and variety!

CHOICE AND VARIETY



The Tavern

Open daily in high season for breakfasts, lunches and evening entertainment. Mid season, weekend evening entertainment plus open daily for lunches. Open for lunch during low season. Seats bookable in advance for a small fee.

RJ's

Open from February to November. February 10th - 19th then weekends until March 30th. Nightly until November 4th then weekends only. Please note prams and pushchairs cannot be accommodated at busy times such as weekends and school holidays.



With bags of smiles, our talented Somersstars are here to make sure you have a fun filled holiday!



Berties

Open nightly in high season and weekends mid/low season. Adult only lounge bar with late night karaoke on Fridays and Saturdays.



Dickies

Open nightly in high season. Pushchair friendly venue. Family entertainment venue.

For your comfort and safety children must be accompanied by an adult in the venue at all times, and on the dance floor after 9.30pm. We are sorry but prams and pushchairs cannot be accommodated in some venues during busy periods.



For family entertainment we simply cannot be beaten, whether it is RJ's featuring live cabaret, Somerstar show stoppers and our very own piglet shows or Dickies featuring the best in children's entertainment. In addition, The Tavern is aimed at our over 12s and at certain times is for adults only and has live cabaret to suit all tastes. For a quieter relaxing drink our adult only bar Berties, is the perfect choice.

Entertainment includes:

- Visiting Acts - to suit young and old
- A great party atmosphere.
- Showtime spectacular
- Cabaret
- Bingo - accumulator saw a jackpot of **£4602.80**
- Games
- Prizes
- Competitions
- Comedy
- Themed breaks
- Family breaks
- Adult only breaks
- Box office 2012
- Tributes



For info on dates and acts call **01278 751235** or book online: **www.hru.co.uk**

Park Opening Times

MARCH							APRIL							MAY								
M	5	12	19	26			M	2	9	16	23	30				M	7	14	21	28		
T	6	13	20	27			T	3	10	17	24			T	1	8	15	22	29			
W	7	14	21	28			W	4	11	18	25			W	2	9	16	23	30			
T	1	8	15	22	29		T	5	12	19	26			T	3	10	17	24	31			
F	2	9	16	23	30		F	6	13	20	27			F	4	11	18	25				
S	3	10	17	24	31		S	7	14	21	28			S	5	12	19	26				
S	4	11	18	25			S	1	8	15	22	29		S	6	13	20	27				

JUNE							JULY							AUGUST								
M	4	11	18	25			M	2	9	16	23	30				M	6	13	20	27		
T	5	12	19	26			T	3	10	17	24	31			T	7	14	21	28			
W	6	13	20	27			W	4	11	18	25			W	1	8	15	22	29			
T	7	14	21	28			T	5	12	19	26			T	2	9	16	23	30			
F	1	8	15	22	29		F	6	13	20	27			F	3	10	17	24	31			
S	2	9	16	23	30		S	7	14	21	28			S	4	11	18	25				
S	3	10	17	24			S	1	8	15	22	29		S	5	12	19	26				

SEPTEMBER							OCTOBER							NOVEMBER								
M	3	10	17	24			M	1	8	15	22	29				M	5	12	19	26		
T	4	11	18	25			T	2	9	16	23	30			T	6	13	20	27			
W	5	12	19	26			W	3	10	17	24	31			W	7	14	21	28			
T	6	13	20	27			T	4	11	18	25			T	1	8	15	22	29			
F	7	14	21	28			F	5	12	19	26			F	2	9	16	23	30			
S	1	8	15	22	29		S	6	13	20	27			S	3	10	17	24	31			
S	2	9	16	23	30		S	7	14	21	28			S	4	11	18	25				

■ 11am - 10pm
 ■ 11am - 5pm
 ■ 1pm - 5pm
 ■ Closed
 ■ Fireworks* (11am - 10pm)

○ Crazy Golf & Go-Karts - Special £5

*time of Firework displays vary throughout the year. Please check www.brean.com before arrival.

Access to the South West's biggest and best Theme Park direct from site.

Plus stay with us and receive exclusive resident's discounts.

With over 40 rides and attractions for all the family!

From Rollercoasters to Roundabouts we have something for you all. You'll whizz around on our Dodgems or brave Terror Castle! For younger kids there are plenty of rides, including Spinning Tea Cups, Caterpillar, Loony Tunes and much, much more...

The ITV series of Sooty is filmed here! Just see who you might spot...



Visit us online at www.brean.com

8

For the safety and enjoyment of all guests, health and safety restrictions apply. Wristbands operate in sessions and some rides are excluded. Prices correct at time of print

OVER 40
RIDES!
AND ATTRACTIONS

RESIDENTS
PRICE OFFER

UNLIMITED RIDE*
WRISTBANDS £19.99 **£14.99**

TINY TOTS
WRISTBANDS £9.99 **£7.49**

TOKENS ALSO AVAILABLE

STAY
WITH US AND
SAVE £5
ON YOUR
FUN CITY
UNLIMITED RIDE
WRISTBAND

family thrill rides

to suit all the family from a ride on the ever popular dodgems to a white knuckle, breathtaking, adventure on **Shockwave** our rip-roaring giant looping rollercoaster that really pushes the thrill factor to the Max! Plus our new **Astro Storm** - Europe's best massive dark ride rollercoaster! Plunge into the depths of space, pulling 2g as you spin through a meteor storm!

kids rides

Here at Fun City we really look after our smaller guests! Check out our great selection of kids rides - many of which can be enjoyed by parents too!

FREE - MEET & GREET SOOTY

Not a show as such, but a chance to meet big Sooty or Sweep, every day at 3pm. Don't forget your camera!

FREE - FIREWORKS SPECTACULAR

Don't miss our fantastic FREE fireworks displays.

food & drink

Enjoy a full meal or simply a snack, at a variety of food and drink outlets. From burgers and hotdogs for the kids to plated food specials if you prefer something special. None of the family will go hungry here at FUN CITY!



FREE
FANTASTIC
FIREWORKS
14 APRIL • 9 JUNE
1 SEPT • 27 OCT

BREAN
LEISURE PARK
FUN CITY

IT'S
FUNTASTIC

ASTRO
STORM

the UK's
biggest
free admission fun park

CRAZY GOLF,
PITCH AND PUTT
& POOL OPEN
FEBRUARY 11 - 19

THE HOME OF
SOOTY AND FRIENDS

9

Our wide range of fantastic caravan holiday homes and lodges cater for all your needs. We are proud of the standard of our accommodation and are sure you won't be disappointed!

ACCOMMODATION

There is plenty of choice whatever your budget!

Accommodation is located at Holiday Resort Unity, our adjoining site Brean Leisure Park and on our quieter park Golden Sands, half a mile from Brean Leisure Park and near the beach. Some can sleep up to 8 people and all homes are appropriately priced to suit all tastes and pockets. You can even bring your dog (in selected accommodation). We also offer holiday homes specially adapted for wheelchair access. All are equipped to a very high standard with colour TV, fridge, cooking facilities, microwave, bedding, shower, toilet, heating. Gas, electricity, VAT and parking for one vehicle are all included in the hire fees. We even make your beds ready for your arrival so you can come and relax from the outset, plus leave you facilities to make tea and coffee.

To book call **01278 751235** or online **www.hru.co.uk**

NEW IN 2012
**STAY FROM
 £25
 PER PERSON
 SEE PAGE 18**



Signature lounge and kitchen



Our arrival days are Monday's and Friday's - meaning we can offer short breaks for a weekend Fri - Mon, midweek Mon - Fri. Alternatively we can offer weekly bookings.

Keys can be collected from you stated check in time on your arrival day, however you are free to arrive earlier, collect your passes and use the resort facilities. If you cannot make our arrival day, why not come the following day and collect the keys at any time, (you would need to let us know this in advance).

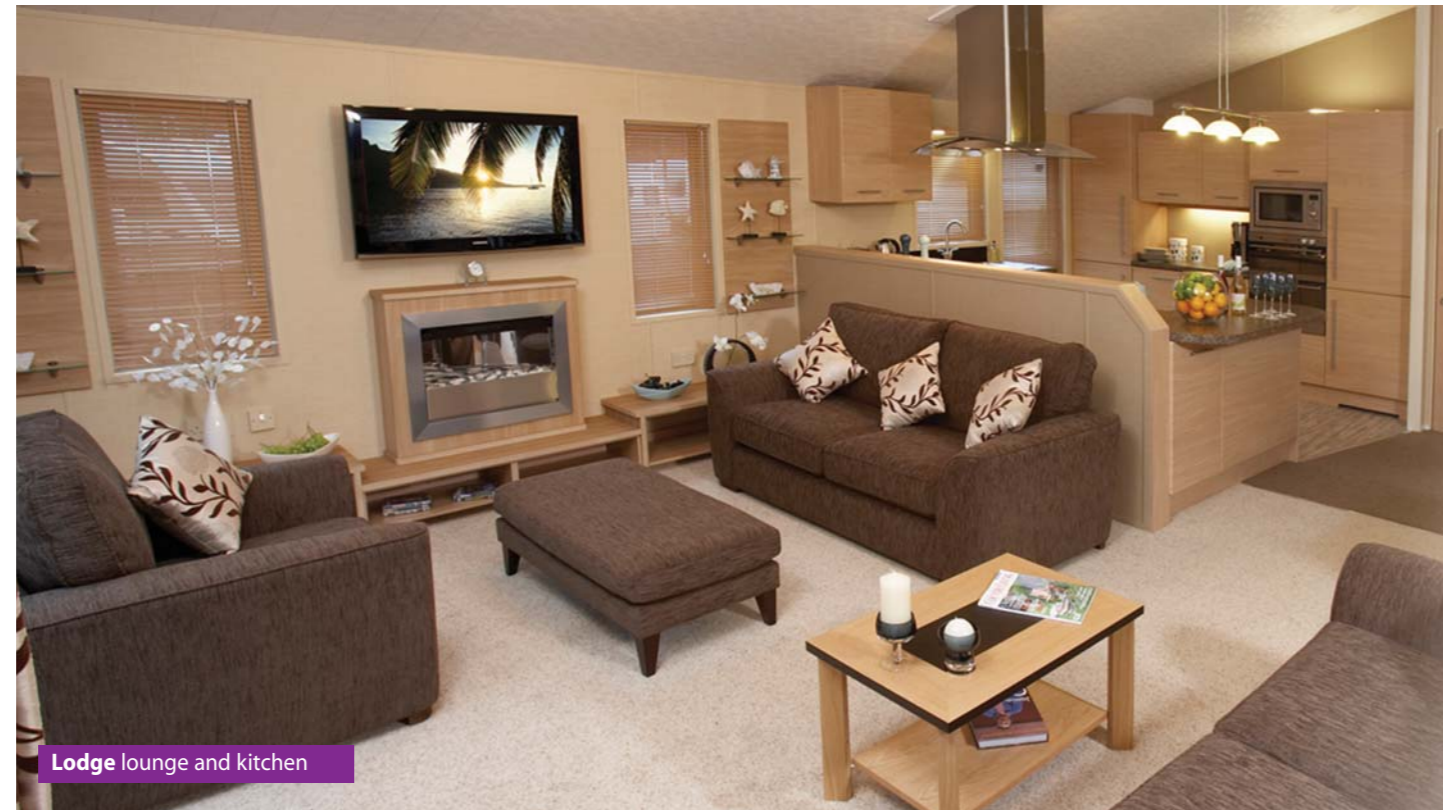
On your departure, please vacate your caravan by 10am and return your keys to Reception. Pets are only allowed in accommodation if specified.

Group Bookings

If you require a group booking of 10 bookings or more, email or call us with your requirements and we will build you a package.
 admin@hru.co.uk

BREAN LODGES SIMPLY THE BEST!

- 3 bedroom for up to 6 people – (1 double, 2 twin)
- Modern accommodation
- Located at Brean
- Leisure Park
- Spacious with an open plan living and kitchen area
- Wall mounted flatscreen TV
- Master bedroom with a 5ft double bed plus
- En-Suite Shower Room
- DVD Player
- CD Player
- Fully Fitted
- Modern Kitchen
- Microwave
- Fridge Freezer
- Dishwasher
- Washer / Dryer
- Family Shower Room
- Check in 2pm



Lodge lounge and kitchen

CARAVANS AND VILLAS

Leisure 8s

- 4 bedroom up to 8 people (1 double, 3 twin)
- Shower room
- Double glazing and central heating
- A central lounge
- Choice of location – Unity or at the Leisure Park
- Parking for 2 vehicles included
- Check in 3pm

Premier Grand

- 3 bedroom for up to 6 people (1 double, 2 twin)
- Integrated fridge freezer
- Shower room and separate toilet
- Wall mounted TV
- Centrally heated and double glazed
- Check in 2pm

Signature

- 3 bedroom for up to 6 people (1 double, 2 twin)
- Cosy 'home from home feel'
- Modern and classic design
- Full-sized fridge/freezer
- Family shower room with toilet plus a separate toilet
- Double glazing and central heating
- Located at Brean Leisure Park
- Check in 3pm

Villa De Luxe

- 3 bedroom for up to 6 people (1 double, 2 twin)
- Modern and spacious feel
- Cheerfully furnished
- Double glazing and central heating
- Fully fitted kitchen
- Located at Unity
- Check in 3pm

Willow

- 3 bedroom for up to 6 people (1 double, 2 twin)
- Comfortable and contemporary
- They feature a centre lounge with a woodblock effect floor
- En-suite
- Central heating and double glazing
- Located at Unity.
- Check in 3pm



see page 16

To book online or for 360° tours visit: **www.hru.co.uk**



CARAVANS AND VILLAS

Leisure

- Offering great value for money
- 2 or 3 bedrooms (1 double, 2 twin or 1 double, 1 twin and a pullout)
- Fully equipped and well furnished
- Fully fitted kitchen
- Shower room
- Some accept pets
- Located at Unity
- Check in 4pm

Sovereign

- 2 bedrooms for up to 6 people (2 twin and a pullout)
- (37'x12') suitable for wheelchair users and other guests with special needs
- Wider doors and sliding doors
- Spacious low level shower, toilet
- Low level kitchen
- Shower room
- Central heating, double glazing
- Located at Brean Leisure Park and Unity
- Check in 3pm

Don't forget to bring...

- Tea Towels
- Extra pillows (if required)
- Towels
- Cot Linen (if cot is hired)
- Toiletries
- Your booking confirmation

Villas

- Relaxed and bright family accommodation
- 2 bedroom for up to 4-6 people (1 double, 1 twin) 6 berth have a pull out
- Comfortable, space and facilities
- Shower room
- Decked area adjoining.
- Pets accepted
- Located at Unity
- Check in 4pm



see page 16

Included in the Hiring Fees

- Gas & electricity
- Bed linen – Beds already made for you!
- 1 discounted swimming session per person per day
- Children's & Adults entertainment
- Half price golf green fees
- Discounted pitch & putt
- Children's Clubs
- Fishing (licence required)
- Discounts for Theme Park tokens and wristbands
- The Gym and Sun Bed can also be used for an additional fee



Western Sunset Lodge



GOLDEN SANDS

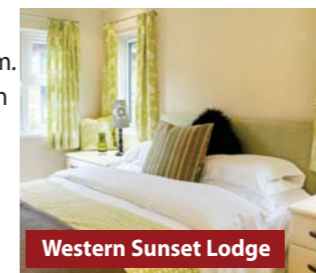
If you are looking for a quieter beach style holiday we have the place for you! Located half a mile from Brean Leisure Park, right next to the beach at Brean Sands you will have a private access route to the five miles of golden sandy beaches running from Brean Down to Burnham on Sea. Take a romantic walk and enjoy the sunset at dusk, or just take a casual walk and enjoy the scenery which includes Brean Down, Steephholm Island, and other local points of interest. Why not take your fishing rod with you and try out some sea fishing, or for the less adventurous you could just buy an ice cream and unwind.

The lodges are available all year round including Christmas and New Year.

Western Sunset Lodge

- Own private hot tub!
- 2 bedroom for up to 4 people (1 double, 1 twin)
- Open all year round
- Overlooking the beach
- Spacious and excellently equipped
- Plenty of special touches!
- Wall mounted flatscreen TV
- DVD Player
- CD Player
- Fully fitted modern Kitchen

- Microwave
- Fridge Freezer
- Dishwasher
- Washer/Dryer
- Family Bathroom.
- Master Bedroom with en-suite Shower room.
- Located at Golden Sands
- Check in 2pm



Western Sunset Lodge



Mendip Lodge

Mendip Lodge

- 2 bedroom for up to 4 people (1 double, 1 twin)
- Open all year round
- A real home from home
- Fully furnished
- Fully fitted modern Kitchen
- Microwave
- Veranda & your own fenced garden
- Fridge Freezer
- Washing machine
- Master bedroom with an ensuite including a bath
- Located at Golden Sands
- Check in 3pm

Quantock Lodges

- 2 bedroom for up to 4 people (1 double, 1 twin)
- Large living and dining area.
- Veranda & your own fenced garden
- A real home from home
- Fully furnished
- Fully fitted modern Kitchen
- Microwave
- Fridge Freezer
- Washing machine
- Master bedroom with an ensuite
- Located at Golden Sands
- Check in 3pm



Mendip Lodge

Rio

- 2 bedroom for up to 6 people (1 double, 1 twin, 1 pull out)
- Spacious range – high standard
- Contemporarily decorated
- Centrally heated and double glazed
- Located at Golden Sands
- Check in 3pm

Vacation

- Very good value
- 2 and 3 bedrooms up to 6 berth (1 double and 2 twin or 1 double, 1 twin and a pull out)
- Kitchen and shower room
- Located at Golden Sands
- Pets accepted in some homes
- Check in 4pm

Vermont

- Very good value
- 2 and 3 bedrooms up to 6 berth (1 double and 2 twin or 1 double, 1 twin and a pull out)
- Pets accepted
- Kitchen and shower room
- Located at Golden Sands
- Check in 4pm



Rio

book online: www.hru.co.uk or call **01278 751235**

EURO TENTS FOR HIRE

**STAY FROM
£6.75
PER PERSON
PER NIGHT**

Want to enjoy the outdoor life but without the hassle? Why struggle with your own?

Hire one of ours, these have proved to be extremely popular. Each tent is equipped with beds, table and chairs, sink unit, security system, cooking hob with microwave and fridge. Also included is a colour tv, toaster, crockery, pots and pans and there's even a carpet! Electricity is provided at no extra cost. All you need to bring are your sleeping bags, pillows and towel etc. It couldn't be easier! 3 bedroom tents on our brown field. We regret no pets accepted.

Eurotents

- 3 bedrooms for up to 6 people
- Colour tv
- Fridge
- Cooking hob
- Microwave
- Pots & pans
- Crockery
- Security alarm
- You need to bring your sleeping bags, pillows and towel etc.
- Located on Brown field at Unity
- Check in 3pm

FREE SHOWERS



call **01278 751235**
or book online: www.hru.co.uk

CAMPING AND TOURING



see page 16

Pitches available for caravans, motorhomes (up to 40ft), RVs and tents

Our choice of touring pitches include grass serviced with electric hook up, hard standing or if you prefer a standard grass pitch with no electric hook up. Most pitches have a shared water tap. We have 3 field areas you can choose from depending where you want to be on the resort. All fields have modern brick built amenity facilities featuring showers, baths, toilet and washing facilities with the luxury of heated floors. There are adjoining laundry and wash-up facilities. Disabled facilities also available. Each field has its own wardens to look after you and assist you, they also ensure that the amenity block is cleaned and monitored. The wardens will meet and greet you and allocate your pitch on your arrival at the field.



The park is flat and you can choose an area that best suits your needs:

GREEN FIELD
Close to the play area

BROWN FIELD
Overlooks the open countryside and is approximately 600 yards from reception.

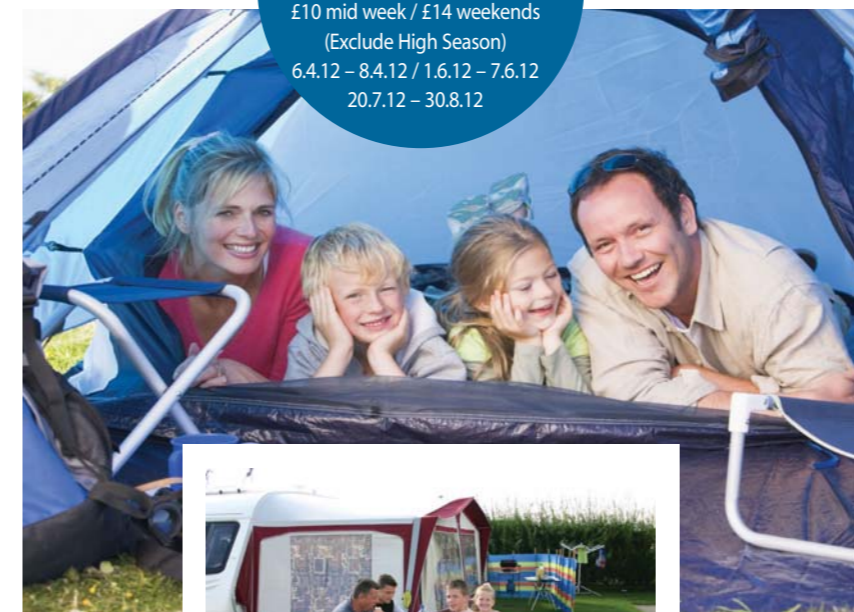
YELLOW FIELD
Close to Brean Leisure Park and the fishing lake. Largest field. New family rooms.



For guests with disabilities please note that there are unisex disabled wash/toilet facilities on all fields. All rooms are accessed through use of a RADAR key, if you do not have a key one can be hired from the Warden.



MOTOR HOME ADVANCE SPECIAL ADVANCE OFFER
For 2 persons in a small Motor Home
£10 mid week / £14 weekends
(Exclude High Season)
6.4.12 - 8.4.12 / 1.6.12 - 7.6.12
20.7.12 - 30.8.12



Caring for Your Holiday Needs

- Free heated shower block
- Free showers
- Baby changing area
- Points for hairdryers and shavers
- Water and disposal area
- Resort security & wardens
- Coin operated Launderettes
- Dishwashing areas
- Controlled vehicle access
- Car parking space next to pitch
- Shared water tap and drainage
- All weather hard standing pitches
- Family room (with bath)
- Unisex disabled room

Just One Night?

We can usually find a pitch for an overnight stop. During school holidays advance booking is minimum 2 nights (3 nights at Bank Holiday weekends).



Included in the Fees

- Parking for one vehicle (next to accommodation)
- One discounted Swimming Session per day
- Children's Clubs
- FREE Entertainment
- Outdoor Children's Play Area
- Fishing (Rod License required).
- Opportunity to purchase 1/2 price Golf Green Fees, discounted Theme Park Tokens and Wristbands.
- Includes one car/ RV or one car per caravan/tent and 2 occupants.
- Awning (breathable ground sheets only).
- Children of 4 and under FREE.



RALLIES WELCOME
DISCOUNTS AVAILABLE
We have been welcoming Caravan Rallies for a number of years. We can offer pitches, dinners, meeting rooms and more. Discounted pitches.

Seasonal Pitches

Leave your caravan here from as little as £7.96 a night, come and visit as often as you like and use our full range of facilities for up to 8 people. We can accommodate your touring caravan at a discounted rate to include electricity, hard standing, shared water tap and drain.
February 10th - November 18th from **£2395** for the 2012 season. Call **01278 751235**

PLEASE NOTE:

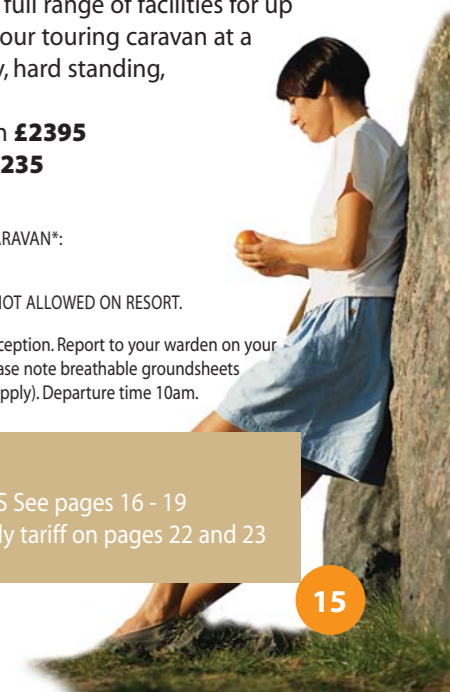
WE DO NOT ACCEPT THE FOLLOWING MAKES OF CARAVAN*: HOBBY, ROMA, TABBERT, LMC, TEC & WEIPPART.

*CORRECT AT TIME OF PRINT. COMMERCIAL VEHICLES NOT ALLOWED ON RESORT.

Arrivals are accepted from 11am. Please check in at reception. Report to your warden on your field located at the amenity block before pitching. Please note breathable groundsheet must be used in awnings and tents (restrictions may apply). Departure time 10am.

HOW TO BOOK

CHOOSE YOUR PITCH TYPE AND DATES See pages 16 - 19 for special discounts or view our nightly tariff on pages 22 and 23



SPECIAL OFFERS AND EVENTS 2012

February

10th - 19th
10th - 18th Nov.

February Half Term
Motor Home Advance Special (excludes 6.4.12-8.4.12 / 1.6.12-7.6.12 / 20.7.12-30.8.12)
Crazy Golf Pitch & Putt & Pool Open
Swimming Break
£25 Holidays

11th - 19th
14th - 17th
17th - 29th March

First Time Visit
Strictly Unity Dancing
First Time Visit
First Time Visit
Yesterday Once More - 70's
Price Promise - Spring Breaks
Touring Offer - Pre Easter Special

March

2nd - 4th
2nd - 4th
9th - 11th
16th - 18th
23rd - 26th
30th - 5th April
30th - 5th April

Swimming Break
Price Promise - Easter Breaks
Price Promise - Late Spring
Touring Offer - Easter Special
Swimming Break
S Club Reunion Tour
Free Fireworks
Country Music Festival
Senior Citizens Special

April

3rd - 6th
6th - 8th
9th - 6th May
9th - 12th
10th - 13th
14th
14th
16th - 22nd
24th - 3rd May

£25.00 Holidays (excludes 18th-21st)
Over 50's Break
Bobby Davro
Motor home Special

May

7th - 31st
8th - 17th
19th
21st - 30th
June
1st - 7th
5th - 8th
8th - 26th July
9th
12th - 21st
16th
22nd - 1st July
23rd
25th - 19th July

Price Promise - Spring School Hols.
Swimming Break
Price Promise - Summer
Free Fireworks
Over 50's Break
Mick Miller
Country Music Festival
Ben Curtis & The Foundations
Touring Offer - Early Summer

July

20th - 26th
24th - 27th
27th - 30th August
31st - 3rd August

Touring Offer - School Holiday Madness
Swimming Break
Price Promise - Summer School Hols.
Swimming Break

August

7th - 10th
14th - 17th
21st - 24th
28th - 31st
31st - 9th Sept.
31st - 27th Sept.
31st - 27th Sept.

Swimming Break
Swimming Break
Swimming Break
Swimming Break
Model & Hobby Break
Price Promise - Early Autumn
Touring Offer - Late Summer

September

1st
7th - 16th
17th - 26th
22nd
27th - 7th October

Free Fireworks
Motor home Special
Over 50's Break
Mike Scott's Four Tops Revue
Country Music Festival (Hiring starts 26th)

October

8th - 18th
8th - 18th
9th - 18th
13th
19th - 1st Nov.
19th - 1st Nov.

Price Promise - Autumn Offer
£25 Holidays
Senior Citizens Special
East Coast Boys
Price Promise - October Half Term
Touring Offer - October Half Term Price Rollback!
Take All That
Swimming Break
Free Fireworks

November

2nd - 5th
2nd - 18th
2nd - 4th
9th - 12th
16th - 18th
16th - 18th
16th - 19th
23rd - 26th
30th - 3rd Dec.

Yesterday Once More - 70's
£25 Holidays
Carnival Breaks
Carnival Breaks
Country Music Festival
Yesterday Once More - 60's
Yesterday Once More - Soul & Motown
Yesterday Once More - Decades

December

30th - 1st January

New Year Breaks

IT'S BACK! THE UNITY PRICE PROMISE

Back by popular demand!! UNITY'S PRICE PROMISE

We can promise that in 2012 you can get the best price if you book early!

Book and pay half off your holiday at time of booking.

Book by the stated dates and we guarantee you will not be able to book a holiday direct with us cheaper!*



HIRING OFFERS • book by 28th February 2012

February Half Term	Spring Breaks	Easter Breaks
Save up to 25% off brochure price - 10-16 February	Save up to 35% off brochure price - 30th March-5th April	Save up to 25% off brochure price - 6th-8th April
Late Spring	Spring School Holiday	
Save up to 35% off brochure price - 9th April-6th May	Save up to 25% off brochure price - 1st June-7th June	
Summer	Summer School Holidays	
Save up to 35% off brochure price - 8th June-26th July	Save up to 25% off brochure price - 27th July-30th August	
Early Autumn	Autumn Offer	October Half Term
Save up to 35% off brochure price - 31st Aug-27th Sep	Save up to 35% off brochure price - 8th -18th Oct	Save up to 25% off brochure price - 19th Oct-1st Nov

* Subject to availability and can be withdrawn at any time.

TOURING OFFERS

must be paid in full at time of booking, at least 7 days before arrival

Pre Easter Special	School Holiday Madness
30th March-5th April Only £5 per person, per night (based on 4 sharing) Min 3 nights	20th-26th July Just £7 per person, per night based on 4 sharing - min 4 nights. Enjoy the school holidays and get outstanding value!
Easter Special	Late Summer
9th-12th April 4 night break only £5 per person, per night (based on 4 sharing) Min 4 nights	31st Aug-27th Sep Just £7 per person, per night based on 4 sharing - min 4 nights. Enjoy the school holidays and get outstanding value!
Early Summer	October Half Term price Rollback!
25th June-19th July Family special based on 4 sharing, just £98 per week or 3 nights for £59. That is an incredible £3.50 per person, per night, Unbeatable value!	19th Oct-1st Nov Family special based on 4 sharing, just £98 per week or 3 nights for £59. That is an incredible £3.50 per person, per night, Unbeatable value!

SPECIALIST EVENTS

Model & Hobby Break

Bring your own model aircraft, boat or car and join in the activities and enjoy our entertainment.

Dates: 31 August - 9th September (3, 4, 7 or 10 night break)

Touring: 20% off brochure price.

Hiring: 20% off brochure price, Short break or week

Carnival Breaks

Watch the famous Somerset illuminated carnivals. The biggest in the world. Coach seats extra for North Petherton, Glastonbury & Western-Super-Mare. Based on 2 persons.

Dates: 2 - 4 November, 9 - 12 November, 16 - 18 November

Touring: From £13.00 (saving £10 per night) per night on a hard standing pitch (minimum of 2 nights).

Hiring: 2 or 3 night break arriving on a Friday £49 per night (from just £8.16 per person!). Only available 9 - 12 November.

GOLF BREAK

Open all year round

Enjoy our very own Brean Golf Club, 18 hole, par 71 golf course.

All holiday guests receive half price green fees.

If you are a society or group please contact us for details of rates and tailored packages.



Enjoy a round of golf from £10 per round

Let us build a package to include your accommodation and golf... call 01278 751235

Fantastic 9 hole PITCH & PUTT Golf for all the family

Sporting groups / group bookings

When you take your sports team on tour you want to enjoy the sport and the camaraderie without having to worry over the details. Our dedicated organiser will take care of every-thing for you with your accommodation and any presentation/function needs to create a tailor made package for your team to a realistic budget.

Swimming Break

14th - 17th February • 3rd - 6th April

10th - 13th April • 5th - 8th June

24th - 27th July • 31st July - 3rd August

7th - 10th August • 14th - 17th August

21st - 24th August • 28th - 31st August

23rd - 26th October

4 - 15 year olds. Learn to swim in this crash 4 day course. Lessons for beginners, movers and improvers. Arrive Monday, lessons Tue - Fri. Use our **PRICE PROMISE** and then pay £20 per person for swimming lessons. Lessons need to be booked and paid for at the time of making your booking. (min numbers required for course to run)

ADULT BREAK ACTIVITIES

REFRESHED AND REVITALISED FOR 2012

Over 50's Break

Includes discounts for drinks and our famous 2 for 1 Carvery night and evening entertainment. Based on 2 persons.

Dates: 8th - 17th May, 12-21 June, 17-26 September

Touring: £99 for 10 nights on a serviced pitch.

Hiring: £262 for 10 nights in a leisure caravan.

Senior Citizen's Special

Includes discounts for drinks and our famous 2 for 1 Carvery night plus evening entertainment. Based on 2 persons.

Dates: 24 April - 3 May, 9th-18th October

Touring: 10 nights for £89 on a serviced pitch.

Hiring: 10 nights for £240 in a leisure caravan.

Motor home Special

Includes discounts for drinks and our famous 2 for 1 Carvery night and evening entertainment. Tourers, tents and motor homes all welcome.

Dates: 21-30 May, 7-16 September

Touring: £9.49 per night (minimum of 5 nights) for 2 people on a serviced pitch

Discounts may only apply at certain times of the day or on certain days and will be restricted to a selection of products.

*These breaks maybe held in RJs/Berties and not exclusively adult only.

Motor home advance special

For 2 persons in a small Motor Home

Advance offer: £10 mid week / £14 weekends (Exclude High Season)

6.4.12 - 8.4.12 / 1.6.12 - 7.6.12 / 20.7.12 - 30.8.12

NEW 2012 STRICTLY UNITY DANCING

2nd-4th March

With the growth of interest in ballroom dancing all over the UK we have created a new break for dancers of all abilities to enjoy our ballroom dancing weekend. Ballroom dancing weekends are a great way to really get into the fun of dancing - our exciting programme and easy atmosphere make dance accessible to everyone.

Adult only: Touring £39 (min charge 2)

Hiring £69 (min charge 2)

Price includes accommodation, instruction, cabaret, celebrity appearance



WATCH
THE WEB
AND
SAVE

DISCOUNTS

First Time Visit

We offer some taster weekends so you can bring your touring caravan, motorhome or tent and stay with us for FREE. The facilities are limited at this time of year but include entertainment weekends in our complex RJ's.

Dates: 2-4 March, 9-11 March, 16-18 March
Touring: 2 nights FREE including a serviced pitch.
We can't be fairer than that!

£25 HOLIDAYS

A fixed price holiday with no hidden extras, we have included entertainment passes, gas and electricity as standard!

Crazy prices to come and stay with us are sure to sell out fast so book early as limited spaces.
Per Person Breaks at £25 per person based on min 4
17 February 2012 – 29 March 2012
7 May 2012 – 31 May 2012 (excludes 18-21 May)
8 October 2012 – 18 October 2012
2 November 2012 – 18 November 2012

2012 LOYALTY CARD SAVER

Repeat visits this year, take advantage of your loyalty card and receive **10% discount off your 2nd and subsequent visits in 2012!**
(Cannot be used in conjunction with any other offer)



COUNTRY MUSIC FESTIVAL

ENJOY SOME OF BRITAIN'S TOP COUNTRY BANDS IN OUR COUNTRY BREAKS

**16 – 22 April, 22-June – 1 July,
27 September – 7 October**
(Hiring starts 26th)

Experience the Brean Country Festival,
day and evening entertainment.
Stalls, Line Dancing and more!
16th – 18th November

LOOK OUT FOR OUR COUNTRY MUSIC NIGHTS

April

Touring: £12.50 per night on a serviced pitch,
based on 2 persons (minimum of 5 nights).
Hiring: From Short breaks £145, 7 nights £255

June

Touring: £13.00 per night on a serviced pitch,
based on 2 persons (minimum of 5 nights).
Hiring: From Short breaks £185, 7 nights £339, 10 nights £429

September

Touring: £13.00 per night on a serviced pitch,
based on 2 persons (minimum of 5 nights).
Hiring: From Short breaks £206, 7 nights £359, 10 nights £409

November

Touring: £12.50 per night on a hardstanding pitch,
based on 2 persons (minimum 3 nights).
Hiring: From £145 – based on a leisure caravan

Seat reservations in The Tavern can be made at time of booking for an additional £1 charge per seat.

ALSO NEW YEAR BREAK

See the right hand panel for break details.



YESTERDAY ONCE MORE MUSIC WEEKENDS

**We have some fantastic themed breaks
featuring 70s, 60s, Decades and much more ...**

3 nights from 99 per person entertainment and accommodation included.

Featuring... **Darts** (Daddy Cool, Come Back My Love),
Rubettes featuring **Bill Hurd** (Sugar Baby Love),
The Glitter Band (Rock n Roll), **Paperlace** (Billy don't be a Hero),
Brotherhood of Man (Save your Kisses for me),
Alvin Stardust, Marty Wilde, Jimmy James and the Vagabonds,
Merseybeats, Marmalade, The Jets
and many more – 13 fantastic bands over 3 nights!

23-26 March - 70s

2-5 November – 70s

16-19 November – 60s

23-26 November – Soul & Motown

30 November-3 December – Decades



How to book: www.yesterdayoncemore.co.uk or call **01934 733958**

NEW YEAR BREAKS

PRICE
FREEZE!

**RJ's is the place to go if you want to start
2013 in style!**

Join us for 2 nights of fabulous New Year fun.
Package includes family entertainment December 30th,
then buffet and live 'party band' December 31st
not forgetting fun, games, prizes and a disco until the early hours.

Date: 30th December – 1st January
Touring: **£80** per adult & 16+, **£25** 5-16 years, **£10** 4 & under
Hiring: **£110** per adult & 16+, **£35** 5-16 years,
£20 4 & under (min charge 2 adults and 1 child)

THE TAVERN

**2 night Country Music Break
for adult's and over 12's.**

Live entertainment on 30th
and 31st plus buffet on 31st.
**Enjoy some of the UK's best
country music bands in our
superb festive environment!**

Touring: £59 per person
on a hardstanding pitch.

Terms & Conditions
All offers based on 2 person sharing unless otherwise stated in offer. Excludes offers charged per person.
Booking for special offers must be made 14 days in advance of the holiday start date to be eligible.
All dates started are arrival and departure dates. All offers are subject to availability and can be withdrawn
at anytime.
Touring: Extras are the same for all the offers unless stated in offer. £4.00 per person per night. £2.50 hard
standing per night. £2 per dog per night.
Hiring: Extra person £39 per break excluding per person offers.
Care and Respect Bond: £50 returnable within 7 days of departure.
For more information or to book any of the breaks, please call or visit our website.

Holiday information

1. TERMS AND CONDITIONS OF YOUR HOLIDAY

Bookings and reservations will be accepted subject to the following terms and conditions.

2. BOOKING AND RESERVATIONS

The first named person is responsible for the booking and must be 21 years of age or older. He/she warrants that the party consists of a family or part of a family. No accommodation is available for exclusively under 21s or groups of three or more men or women unless part of an organisation. If party make up on arrival does not comply with terms and conditions admission may be refused. No more than the maximum numbers stated on the booking application shall be permitted to occupy the accommodation booked. Children or babies of any age count as one person. All bookings must have a valid postcode. Hiring bookings are from 3pm on the day of arrival to 10am on the day of departure, but if you arrive before 3pm you are welcome to use our facilities. Accommodation types, pitch types and pitch numbers can be requested but cannot be guaranteed. Touring arrivals are accepted between 10am and 8pm and departure time is 10am. In low and mid season at Holiday Resort Unity, you may stay on until 4pm on payment of an additional fee. A contract is formed by the submission of a completed booking form or a telephone agreement where you pay by credit/debit card.

Pricing Policy.

Booking for special offers must be made 14 days in advance of the holiday start date to be eligible. All offers are subject to availability. Offers are subject to promotional availability and can be withdrawn at any time. Prices include VAT at the current rate where applicable and will be altered if the rate of VAT changes.

Park Roads and Vehicles.

All roads within the park are subject to the Road Traffic Act. Vehicles must not exceed the stated speed limit and must be driven by holders of a current driving licence with adequate third party insurance. All vehicles are parked at the owners risk. We do not accept commercial vehicles on the resort.

Termination/Nuisance.

We reserve the right to decline a booking, transfer a booking, or terminate a holiday. Termination because of unreasonable behaviour or commitment of a criminal offence by any members of the party on the booking form will be without compensation. We operate a 'site watch' scheme with the local police and other holiday parks, a traffic light system dealing with anti social behaviour.

3. PRIVILEGE CARDS

For licensing purposes, all party members names are required to be registered and cards may be required to use certain facilities such as the bars, entertainment, swimming pool, golf course and the hire department. Second vehicle charge applies. Your cards will be sent to you and should be carried with you at all times. They are only valid for the duration of your holiday and must be signed by the holder. (Hiring guests collect their cards on arrival).

*Replacement passes - charge £2 per card. Privilege cards are not a suitable form of ID. Should ID be requested in licensed premises, a passport, photo driving License or PASS proof of age card must be shown. A dress code may operate in some venues. The management reserves the right to refuse admission. Persons under the age of eighteen must be accompanied by an adult in all entertainment venues and bars.

4. PAYMENT

Deposits for bookings are calculated as £20 for touring and camping and £50 for hiring. All balances must be paid at least 42 days before arrival. If the balance is not paid, your booking will be

cancelled and your deposit lost. We do not send reminders. Bookings for arrival within 42 days must be paid in full at the time of booking. Your accommodation will only be reserved until 6pm on the day of arrival unless you notify us in advance. There is a charge of £10 should a cheque be returned unpaid or need to be represented, or a charge of £5 should a credit card be declined. Any alterations to a booking are subject to a £10 administration charge. Credit card booking fee £3 per booking/per transaction (Debit/Switch no charge).

Late Bookings.

If a booking is made within 5 days of arrival and it has been agreed by management that payment can be made on arrival, only Cash or Credit cards will be accepted. NO cheques are accepted on arrival. Your accommodation will only be reserved until 6pm on the day of arrival unless you notify us in advance.

5. CANCELLATION PLAN

To minimise risks in the unfortunate event of cancellation, you are strongly advised to take advantage of our own inexpensive and simple cancellation plan, payable with the deposit at the time of application for your holiday reservation. You are covered if you have to cancel; a) Because of illness, death or injury of any member of your party detailed on the booking form, b) if you or your spouse are a witness in court or are required to do jury service, c) if the police require your presence for whatever reason, d) if your permanent home is made uninhabitable through fire, storm, floods, subsidence, e) if a close relative suffers injury or dies or the death of a business associate, partner or co-director. You must notify us in writing immediately the circumstances arise and supply supporting evidence. The fee is: Tourers and Camping - £10 per booking. Lodges, Caravans and Eurotents - £20 per booking. If no cancellation plan is taken out you will forfeit 100% of the booking fees. Cancellation charges shown in grid below.

NUMBER OF DAYS IN ADVANCE	CANCELLATION CHARGES
MORE THAN 7 DAYS	BOOKING DEPOSIT
LESS THAN 7 DAYS	CREDIT NOTE FOR THE CURRENT YEAR

6. ACCOMMODATION CARE & RESPECT BOND

The occupier is responsible for any loss or damage to either the pitch/accommodation or its equipment or any property belonging to the company. Please leave your pitch/accommodation clean and tidy in readiness for the next occupier. Any damage or losses will be charged for. If you occupy company accommodation your refundable deposit of £50 will be returned by cheque within 7 working days of departing, provided that there is no loss or damage and all accounts are settled and the accommodation is left clean. We reserve the right to enter the pitch/accommodation to carry out essential maintenance, every endeavour will be made to limit any inconvenience to your holiday.

7. CHILDREN

Facilities such as the Piglet Club and Sally's Tiny Trotters are provided with a special programme, however we would point out that we do not provide child care facilities and children remain the responsibility of the parent/guardian at all times. Under 8s must be accompanied by an adult during our clubs.

8. PETS

Pets are permitted on payment of a fee in some areas at our resort and owners are requested to encourage their pets to use the special 'Dog Walk' and not to allow pets to foul on the park. Dogs are to be kept on leads at all times. A maximum of two dogs per unit is permitted. Pets are permitted in some hired accommodation. This must be confirmed at time of booking and fee paid. We reserve the right to refuse certain breeds of dog we

consider inappropriate for a family park. If pets continue to foul the park and you do not clear it up, or cause a nuisance, you will be asked to leave the park without compensation.

9. TOURING PITCHES

Most pitches are individually marked. If more than one pitch is booked, we are not able to guarantee that they will be adjacent although this is normally possible if the parties arrive together. Pitches are allocated on a first come first choice basis. Your pitch reservation will be held until 6pm on the day of arrival. If you are going to be late, please telephone us with your arrival time. Awnings - must only be the same length of the caravan. Breathable groundsheet must be used and lifted daily. No generators allowed. 28 Days maximum stay (14 days on one pitch). We do not accept certain makes of Caravan/Motorhome, you will be notified at time of booking if your reservation is not accepted. We do not accept the following makes of caravans*: Hobby, Roma, Tabbert, Imc, Tec & Weippart *correct at time of print. Max 2 pup tents per pitch. If an awning is erected one pup tent permitted.

10. HOOK UPS FOR TOURING UNITS

Hook ups have a 16-amp EEC 3-pin socket (max 10 amp) which conforms to the 16th edition of the IEE Wiring Regulations. Most pitches share a water tap and waste drain.

11. ELECTRICAL AND GAS APPLIANCES

These have been safety checked, customers use their own equipment at their own risk. The company will not accept responsibility for the use by you of any unsafe or unsuitable equipment which has not been supplied by the company. Supply charges are included in the hire fee in company accommodation. Telephone calls are charged per unit.

12. GENERAL

All facilities are subject to availability and all acts and prices are subject to change without notice. The company tries its best to see that all facilities as advertised are available in high season. Some facilities may not be available in mid and low season and have limited opening to either part of the day or weekends only. For reasons entirely beyond our control (e.g. strikes, mechanical breakdowns, illness, non-arrival of any entertainer or weather) such facilities may temporarily not be as advised. We cannot accept liability where such misfortunes occur. No refunds will be given for inclement weather. During inclement weather Eurotents may be affected and all efforts will be made to minimise disruption. No refund can be made on early departure once an accommodation has been paid for and a receipt given. When a specific unit of accommodation or pitch is requested we will do our best to comply with the request but we cannot guarantee to do so. At all times we reserve the right to refuse to accept any booking for whatever reason. Brochure accuracy - every care is taken to ensure that the contents, prices and opening times in this brochure are correct, but the company cannot accept responsibility for errors contained within and their consequences. Disturbances or subject from the resort may also forfeit the return of any bonds subject to the managements discretion. Park rules must be adhered to. Holiday Resort Unity incorporates the facilities of both Unity Farm Holiday Centre Ltd and Brean Leisure Park Ltd all in one resort. Please note: that a car parking charge applies at the Leisure Park, Unity guests are advised to walk. Facilities at the Leisure Park are also available to day visitors.

13. MINOR ALTERATIONS

Any minor alterations, such as change of entertainment, withdrawal of certain facilities may be made by Holiday Resort Unity for reasons beyond our control without any obligation.

14. FRANCHISES/CONCESSIONS

Please note that some facilities are operated on a franchise/concession: Sarah's Pantry, Treasure, Hire Centre, Horse Riding and Fun Park rides, plus Fun Park catering outlets.

15. DATA PROTECTION

The information on the booking form will be stored on computer for the purpose of future distribution of our advertising material. For the purpose of the Data Protection Act 1984, the signing of the booking form confirms your agreement.

16. HEALTH AND SAFETY

We have a legal obligation to adhere to and enforce Health and Safety legislation. Because of this and for your own safety and welfare not all facilities will be available to everyone. Please read the 'IMPORTANT INFORMATION LEAFLET' detailing Health and Safety restrictions at the resort. Should anyone be diagnosed as having an infectious or contagious disease, they will be asked to seek outside medical assistance and leave the Resort. We reserve the right to terminate a holiday for failing to adhere to restrictions. No refund will be given.

17. GUESTS WITH DISABILITIES

If your party includes someone with special needs please let us know when making a booking. Please ask for our Welcome All leaflet detailing access to our facilities on the Resort.

18. PERSONAL POSSESSIONS / LOST PROPERTY

We will not be responsible for the loss or damage of any personal possessions brought onto the park or left in holiday homes. Any left items after 28 days after departure will be disposed of unless reported and claimed within this period. There is a charge for returning any property by post.

19. COMPLAINTS PROCEDURE

If you are dissatisfied with your holiday during your stay it must be reported to reception. In all instances any dissatisfaction must be reported before departure. We cannot accept liability in relation to any claim of whatever nature if you fail to notify us immediately. We will not enter into further correspondence on any matter resolved during your break and accepted as such by you.

20. CANCELLATIONS

We will try hard not to change the date or cancel your booking, but in exceptional circumstances this may be necessary. Reason for this may include (but are not limited to) the minimum number of bookings required not being achieved, or is in our view unlikely to be achieved. We will contact you with your options if this is done.

21. FORCE MAJEURE

In the event of force majeure* no compensation will be paid.

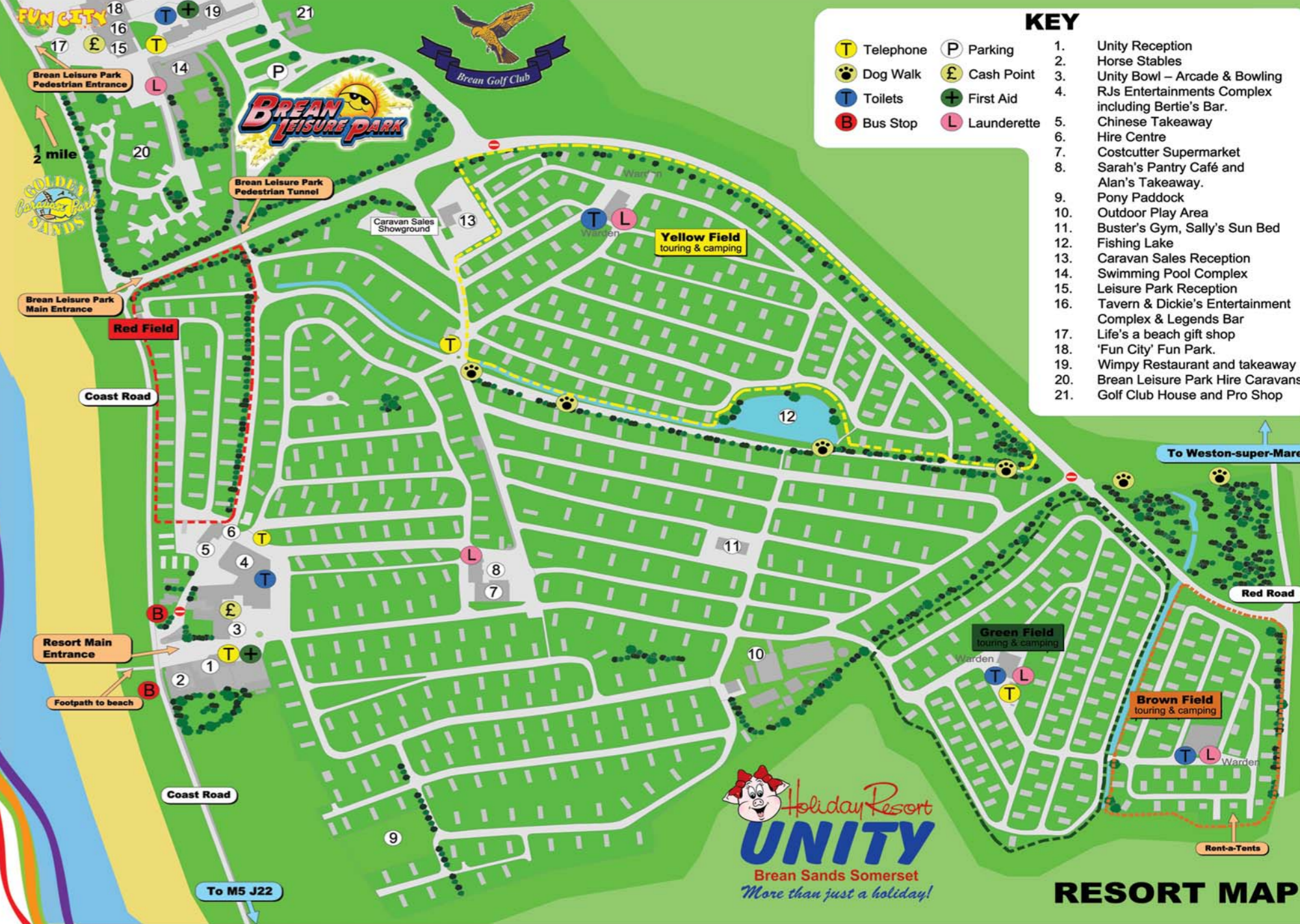
*Force majeure means circumstances beyond our control (but not limited to) industrial disputes, natural disasters, fire, technical problems, loss of utility supply and bad weather.

PLEASE NOTE

The company will not be liable to any person staying on the park or Brean Leisure Park or to any person visiting either park, for any personal injury (fatal of non-fatal) unless caused by a negligent act or omission by the company or its employees. Nor shall the company be liable for any injury, loss or damage to any property, including motor vehicles, personal effects or luggage, however caused or sustained. Claims other than death or personal injury which result from the non-performance or improper performance of the contract by the company are limited to the total cost per person of the holiday for each claimant.

CONTRACTS ACT 1999

It is expressly agreed that the provisions of the contracts (Rights of Third Parties) Act 1999 shall not apply to this agreement nor for the avoidance of doubt shall the terms and conditions herein confer any benefit on any party who has not expressly executed the same.



Guests with disabilities. Please ask for our 'Welcome All Leaflet' detailing access and facilities available for guests with disabilities, to assist you with your stay.

Holiday Resort Unity is approximately 5 miles from the M5 motorway (junction 22) and will be on your right hand side. Brean Leisure Park is a further 200 yards. Turn right at the mini roundabout. Park in the main car park. Reception is at the front of the building. Check out the conditions before you leave at www.highways.gov.uk/traffic.

call **01278 751235** or book online: www.hru.co.uk

2012 PRICES

Here at Holiday Resort Unity we are committed to get you the best price available. With our fantastic special offers you can get the best price by booking early but for those who do not yet know what your plans are we have shown below some examples of our standard pricing throughout the year.

When you are ready for a quote or want to book this can be done online at www.hru.co.uk or call us on **01278 751235** where our team are happy to help.

* Holiday homes price per night up to the berth.
* Touring & camping for 2 people on a standard pitch.

10.2.12 – 16.2.12 Holiday homes from: £56.50 Camping from: £10	17.2.12 – 29.3.12 Holiday homes from: £41.75 Camping from: £8	30.3.12 – 5.4.12 Holiday homes from: £47.50 Camping from: £16	30.3.12 – 5.4.12 Holiday homes from: £80.25 Camping from: £28
9.4.12 – 12.4.12 Holiday homes from: £59.75 Camping from: £16	13.4.12 – 3.5.12 Holiday homes from: £41.75 Camping from: £11	4.5.12 – 6.5.12 Holiday homes from: £53 Camping from: £25	7.5.12 – 31.5.12 Holiday homes from: £41.75 Camping from: £11
1.6.12 – 7.6.12 Holiday homes from: £68.25 Camping from: £28 Eurotent from: £59	8.6.12 – 24.6.12 Holiday homes from: £44.75 Camping from: £13 Eurotent from: £40.50	25.6.12 – 12.7.12 Holiday homes from: £47.75 Camping from: £13 Eurotent from: £48	13.7.12 – 19.7.12 Holiday homes from: £60.25 Camping from: £18 Eurotent from: £56
20.7.12 – 30.8.12 Holiday homes from: £73.25 Camping from: £28 Eurotent from: £72.25	31.8.12 – 7.10.12 Holiday homes from: £44.75 Camping from: £13 Eurotent from: £43.75	8.10.12 – 18.10.12 Holiday homes from: £26.50 Camping from: £12	19.10.12 – 1.11.12 Holiday homes from: £72.25 Camping from: £16
2.11.12 – 18.11.12 Holiday homes from: £41.75 Camping from: £8	RED High Season all facilities	GREEN Mid Season most facilities open	BLUE Low Season, restricted opening times apply. Please check the website or check the relevant facility page.

Touring Extra's per night:

Per person over 2 occupants	£4.00
Pup Tent (2 man).....	£3.00
Gazebo.....	£2.00
Dog.....	£3.00
2nd Car.....	£2.50
Tent over 15ft x15ft low/mid....	£7.00
Over 15ft x15ft high season.....	£15.00

Hiring Extra's per break:

Highchair.....	£10.00
Cot.....	£10.00
Pet.....	£35.00
Patio Furniture.....	£15.00
2nd Car Short Break.....	£10.00
2nd Car Weekly Break.....	£17.50

DATES AVAILABLE
6th APRIL TO
1st NOVEMBER
2012



HALF BOARD

Know exactly what you will spend on food.

Traditional English breakfast plus 2 course evening meal.

Ask for details at the time of booking, must be booked for the full duration of your stay.

Adults & 12+ = £15.49

11 and under = £8.49



HOW TO BOOK



HOW TO BOOK: CHOOSE YOUR ACCOMMODATION & DATES

STEP 1: If arrival is within six weeks full payment is required, if more than six weeks away you can pay a deposit of £20 for camping or touring or £50 for hiring (we recommend you take the cancellation plan see terms and conditions section 5 - this needs to be paid at this time). Book and pay in full at time of booking and save 5% must be at least 3 months before arrival (excludes special offers). If arrival is within 7 days please ring for availability. Full payment will be required by debit/credit card.

STEP 2: Book over the phone with debit/credit card. Have your details ready and ring our booking office **01278 751235**.

OR... Book online at www.hru.co.uk and pay online.

If you require a group booking email or call us with your requirements and we will build a package.

PLEASE NOTE: A CHARGE OF £3 PER BOOKING PER TRANSACTION APPLIES TO ALL CREDIT CARD PAYMENTS. NO CHARGE FOR DEBIT CARDS i.e MAESTRO/SOLO. THANK YOU FOR BOOKING - CONFIRMATION WILL BE SENT TO YOU, TIME ALLOWING, BEFORE YOUR ARRIVAL DATE.

If you would rather have a booking form sent, please email or call us to request one

For special offers
and online bookings

visit

WWW.HRU.CO.UK

or call

01278 751235